

**SMEC**

# PRODUCT LINE UP



# MAKE SMART WORLD

A company with a dream and a future,  
an innovative technology company based on research  
SMEC is leading the way to creating a cutting-edge future.



## LM Guide Type Turning Center



### 5~8inch High Efficiency Gang Type Turning Center

( ): Option

Model	Chuck	Spindle Speed (RPM)	Spindle Motor (Cont./Max) (KW)	Max. Turning Dia. (mm)	Max. Turning Length (mm)	Draw Tube ID (mm)	Swing over Bed (mm)	Travels		Rapid Travels Rate (X/Z)	Number of Tool
								X-Axis	Z-Axis		
PL1300G	5"	6,000	7.5/5.5	135	270	43	360	300	235	24/24	3(5)
PL1600G	A: 6" B: 8"	A: 6,000 B: 4,500	11/15	170	A: 300 B: 270	52	540	450	A: 300 B: 270	30/36	3(6)



### 6~8inch Compact Turning Center

( ): Option [ ] : Mill Type

Model	Chuck	Spindle Speed (RPM)	Spindle Motor (Cont./Max) (KW)	Max. Turning Dia. (mm)	Max. Turning Length (mm)	Draw Tube ID (mm)	Swing over Bed (mm)	Travels		Rapid Travels Rate (X/Z)	Number of Tool
								X-Axis	Z-Axis		
PL2000[M]	A: 6" B: 8"	A: 6,000 B: 4,500	11/15	310 [270]	A: 307 [291] B: 270.5 [261.6]	A: 52 B: 68	570	175	350	36/36	12(24) [BMT45]



### 6~8inch High Efficiency Y Axis Sub-Spindle Turning Center

( ): Option [ ] : Mill Type

Model	Chuck	Spindle Speed (RPM)	Spindle Motor (Cont./Max) (KW)	Max. Turning Dia. (mm)	Max. Turning Length (mm)	Draw Tube ID (mm)	Swing over Bed (mm)	Travels			Rapid Travels Rate (X/Y/Z)	Number of Tool
								X-Axis	Y-Axis	Z-Axis		
NS2100Y	A: 6" B: 8"	A: 6,000 B: 4,500	11/18.5	378	A: 521.3 B: 489	A: 52 B: 68	820	205	110	590	30/10/36	12(24) [BMT45]
NS2100SY	A: 6/5" B: 8/5"	A: 6,000/6,000 B: 4,500/6,000										

※ Chuck : Main Chuck/Sub Chuck

## Box Guide Type Turning Center



### 6~12inch High Performance Turning Center

( ): Option [ ] : Mill Type

Model	Chuck	Spindle Speed (RPM)	Spindle Motor (Cont./Max) (KW)	Max. Turning Dia. (mm)	Max. Turning Length (mm)	Draw Tube ID (mm)	Swing over Bed (mm)	Travels		Rapid Travels Rate (X/Z)	Number of Tool	
								X-Axis	Z-Axis			
SL2000[M]	A: 6" B: 8"	A: 6,000 B: 4,500	15/18.5	360	540 [520]	A: 52 B: 68	570	210 [215]	560	24/30	12(24) [BMT55]	
SL2500[M]	A: 8" B: 10"	A: 4,500 B: 3,500	15/18.5	430 [405]	A: 570 [504] B: 554 [497]	A: 68 B: 77	650	245	600 [540]		24/30	12(24) [BMT65]
SL2500X[M]					A: 850 [784] B: 834 [767]				880 [820]			
SL2500L[M]					A: 1,070 [1,004] B: 1,054 [997]				1,100 [1,040]			
SL3000[M]	A: 10" B: 12"	A: 3,500 B: 3,000	18.5/26	430 [405]	A: 554 [497] B: 528 [456]	A: 77 B: 91	650	245	600 [540]			
SL3000X[M]					A: 834 [767] B: 808 [736]				880 [820]			
SL3000L[M]					A: 1,054 [997] B: 1,028 [956]				1,100 [1,040]			

## Box Guide Type Turning Center



### 12~15inch High Performance Turning Center

( ): Option [ ]: Mill Type

Model	Chuck	Spindle Speed (RPM)	Spindle Motor (Cont./Max) (KW)	Max. Turning Dia. (mm)	Max. Turning Length (mm)	Draw Tube ID (mm)	Swing over Bed (mm)	Travels		Rapid Travels Rate (X/Z)	Number of Tool
								X-Axis	Z-Axis		
SL 3500[M]	A: 12" B: 15"	A: 2,500 B: 2,000	18.5/26	500	780 [750]	A: 103 B: 1175	680	280	855 [825]	20/24	12 [BMT65]
SL 3500L[M]					1,530 [1,500]				1,605 [1,575]		
SL 4000L[M]					30/37				560		



### 15~24inch High Performance Turning Center

( ): Option [ ]: Mill Type

Model	Chuck	Spindle Speed (RPM)	Spindle Motor (Cont./Max) (KW)	Max. Turning Dia. (mm)	Max. Turning Length (mm)	Draw Tube ID (mm)	Swing over Bed (mm)	Travels		Rapid Travels Rate (X/Z)	Number of Tool
								X-Axis	Z-Axis		
SL 4500[M]	A: 18" (15") B: 21" C: 24"	A: 1,800 (2,000) B: 1,500 C: 1,200	30/45	690[620]	1,250 [1,213]	A: 1175 (1175) B: 1400.0 C: 166.5	775	350	1,325	24/30	12 [BMT75]
SL 4500X[M]					2,255				2,330		
SL 4500L[M]					3,055				3,130		
SL 4500XL[M]					5,500				5,500		



### 21~32inch High Performance Turning Center

( ): Option [ ]: Mill Type

Model	Chuck	Spindle Speed (RPM)	Spindle Motor (Cont./Max) (KW)	Max. Turning Dia. (mm)	Max. Turning Length (mm)	Draw Tube ID (mm)	Swing over Bed (mm)	Travels		Rapid Travels Rate (X/Z)	Number of Tool
								X-Axis	Z-Axis		
SL 5500[M]	A: 21" B: 24" C: 32"	A: 1,500 B: 1,200 C: 1,000	A: 30/45 B: 30/45 C: 37/55	690	A/B: 1,097[1,079] C: 1070[1052]	A: 166.5 B: 166.5 C: 232	900	370	1,130	20/20	12 [BMT75]
SL 5500L[M]					A/B: 2197[2179] C: 2170[2152]				2,230		



### 21~24inch High Performance Turning Center

( ): Option [ ]: Mill Type

Model	Chuck	Spindle Speed (RPM)	Spindle Motor (Cont./Max) (KW)	Max. Turning Dia. (mm)	Max. Turning Length (mm)	Draw Tube ID (mm)	Swing over Bed (mm)	Travels		Rapid Travels Rate (X/Z)	Number of Tool
								X-Axis	Z-Axis		
SL 6500[M]	A: 21" B: 24"	A: 1,500 B: 1,200	37/55	900	1,000	140	1,030	470	1,050	12/18	12 [BMT75]
SL 6500X[M]					2,000				2,050		
SL 6500L[M]					3,200				3,270		
SL 6500XL[M]					5,050				5,100		

# Box Guide Type Turning Center

## 32inch High Performance Turning Center

( ): Option [ ]: Mill Type



Model	Chuck	Spindle Speed (RPM)	Spindle Motor (Cont./Max) (KW)	Max. Turning Dia. (mm)	Max. Turning Length (mm)	Draw Tube ID (mm)	Swing over Bed (mm)	Travels			Rapid Travels Rate (X/Z)	Number of Tool
								X-Axis	Z-Axis			
SL 8500[M]	32"	A: 500 B: 300	37/55	900	1,000	232	1,030	470		1,050	12/18	12 [BMT85]
SL 8500X[M]					2,000					2,050	12/15	
SL 8500L[M]					3,200					3,270	12/10	
SL 8500XL[M]					5,050					5,100		

## 6~8inch Y Axis Sub-Spindle Turning Center

( ): Option [ ]: Mill Type



Model	Chuck	Spindle Speed (RPM)	Spindle Motor (Cont./Max) (KW)	Max. Turning Dia. (mm)	Max. Turning Length (mm)	Draw Tube ID (mm)	Swing over Bed (mm)	Travels			Rapid Travels Rate (X/Z)	Number of Tool
								X-Axis	Y-Axis	Z-Axis		
SL 2000Y	A: 6" B: 8"	A: 6,000 B: 4,500	11/18.5	395	A: 490 B: 450	A: 52 B: 68	650	235	105	580	24/10/30	12(24) [BMT55]
SL 2000SY	A: 6/6" B: 8/6"	A: 6,000/6,000 B: 4,500/6,000										

※ Chuck : Main Chuck/Sub Chuck

## 8~10inch Y Axis Sub-Spindle Turning Center

( ): Option [ ]: Mill Type



Model	Chuck	Spindle Speed (RPM)	Spindle Motor (Cont./Max) (KW)	Max. Turning Dia. (mm)	Max. Turning Length (mm)	Draw Tube ID (mm)	Swing over Bed (mm)	Travels			Rapid Travels Rate (X/Z)	Number of Tool
								X-Axis	Y-Axis	Z-Axis		
SL 2500Y	A: 8" B: 10"	A: 4,500 B: 3,500	A: 11/18.5 B: 18.5/26	360	A: 490 B: 476	A: 68 B: 77	650	235	100	580	18/12/24	12(24) [BMT65]
SL 2500LY					A: 1,284 B: 1,271					1,375	18/10/24	
SL 2500SY	A: 490 B: 476	580			24/10/30							
SL 2500LSY	A: 1,284 B: 1,271	1,375										

※ Chuck : Main Chuck/Sub Chuck

## Box Guide Type Turning Center

### 12~15inch Y Axis Sub-Spindle Turning Center

( ): Option [ ] : Mill Type



Model	Chuck	Spindle Speed (RPM)	Spindle Motor (Cont./Max) (KW)	Max. Turning Dia. (mm)	Max. Turning Length (mm)	Draw Tube ID (mm)	Swing over Bed (mm)	Travels			Rapid Travels Rate (X/Z)	Number of Tool
								X-Axis	Y-Axis	Z-Axis		
SL 3500Y	A : 12" B : 15"	A : 2,500 B : 2,000	18.5/26	430	780	A : 103 B : 117.5	850	280	130	865	30/10/30	12 [BMT65]
SL 3500XY					1,530					1,605		
SL 3500LY					2,125					2,200		

### 15~18inch Y Axis Sub-Spindle Turning Center

( ): Option [ ] : Mill Type



Model	Chuck	Spindle Speed (RPM)	Spindle Motor (Cont./Max) (KW)	Max. Turning Dia. (mm)	Max. Turning Length (mm)	Draw Tube ID (mm)	Swing over Bed (mm)	Travels			Rapid Travels Rate (X/Z)	Number of Tool	
								X-Axis	Y-Axis	Z-Axis			
SL 4500XY	A : 18" (15") B : 21" C : 24"	A : 1,800 (2,000) B : 1,500 C : 1,200	30/45	620	A:2140 B/C : 2117	A:1175 B:140 C:166.5	975	350	200	2,270	20/15/18	12 [BMT75]	
SL 4500LY					2,930					3,060			18/10/24
SL 4500XLY					5,000					5,090			18/10/24

## Vertical Turning Center

### 12~32inch High Performance Vertical Turning Center

( ): Option [ ] : Mill Type



Model	Chuck	Spindle Speed (RPM)	Spindle Motor (Cont./Max) (KW)	Max. Turning Dia. (mm)	Max. Turning Length (mm)	Draw Tube ID (mm)	Swing over Bed (mm)	Travels		Rapid Travels Rate (X/Z)	Number of Tool
								X-Axis	Z-Axis		
SLV 500[M]	A : 12" B : 15" C : 18"	A : 3,000 B : 2,000 C : 2,000	18.5/26	500	465	-	700	317	495	20/20	12 [BMT65]
SLV 800[M]	A : 18" (15") B : 21" C : 24"	A : 1,800 (2,000) B : 1,500 C : 1,200	22/30	830	800 [775]	-	890	440	800		12 [BMT75]
SLV 1000[M]	A : 24" B : 32"	A : 1,800 B : 800	37/55	1,000	955	-	1,100	540	955		12 [BMT85]

## Multi-Axis Turning Center

### High Efficiency Multi Axis Turning Center

( ): Option [ ] : Mill Type



Model	Chuck	Spindle Speed (RPM)	Spindle Motor (Cont./Max) (KW)	Max. Turning Dia. (mm)	Max. Turning Length (mm)	Draw Tube ID (mm)	Swing over Bed (mm)	Travels		Rapid Travels Rate (X/Z)	Number of Tool
								X-Axis	Z-Axis		
SL 2000T2Y2	8"	5,000	18.5/22	ø230~ø260	662	68	230	217.5	710	24/40	12(24) [BMT65]

## Special Purpose Machine



### Turning Center for Diff. Case

( ) : Option

Model	Chuck	Spindle Speed (RPM)	Spindle Bore Dia. (mm)	Max. Turning Dia. (mm)	Max. Turning Length (mm)	Draw Tube ID (mm)	Swing over Bed (mm)	Travels		Rapid Travels Rate (X/Z)	Number of Tool
								X-Axis	Z-Axis		
PL 25DC	-	2,500	86	-	-	-	520	-	290	-/24	-



### Turning Center for Quartz

( ) : Option

Model	Chuck	Spindle Speed (RPM)	Spindle Motor (Cont./Max) (KW)	Max. Turning Dia. (mm)	Max. Turning Length (mm)	Draw Tube ID (mm)	Swing over Bed (mm)	Travels		Rapid Travels Rate (X/Z)	Number of Tool
								X-Axis	Z-Axis		
PL 800GB	-	2,200	11/15	650	150	-	800	400	400	24/30	(2)
SL 1000GB	-	1,000	7.5/11	820	340	-	1,000	510	500	16/16	(6)



### 4 Axis Machining Center for Quartz

( ) : Option

Model	Travels (X/Y/Z) (mm)	Spindle Speed (RPM)	Spindle Motor (Cont./Max) (KW)	Table Size	Max. Workpiece Weight	Spindle to Table Surface	Rapid Travels Rate (X/Y/Z)	Tool Shank	Max. Tool Length / Weight	Tool Storage Capacity
MVQ 5000	650/520/475	15,000	11/15	650	500	150-625	40/40/40	BT40	300/8	30

## 5 Axis Machining Center



### 5 Axis Machining Center

( ) : Option

Model	Travels (X/Y/Z) (mm)	Spindle Speed (RPM)	Spindle Motor (Cont./Max) (KW)	Table Size	Max. Workpiece Weight	Spindle to Table Surface	Rapid Travels Rate (X/Y/Z)	Tool Shank	Max. Tool Length / Weight	Tool Storage Capacity
PCV 200_5AX	500/325/510	24,000	22/33	200	50	44 - 555	48/48/36	HSK-A63	200/5	24
MVF 5000	650/520/475	12,000 (15,000)	11/18.5	500	500	150 - 625	40/40/40	BT40	300/8	30



## Tapping Center



### High Speed Tapping Center

( ): Option

Model	Travels (X/Y/Z) (mm)	Spindle Speed (RPM)	Spindle Motor (Cont./Max) (KW)	Table Size	Max. Workpiece Weight	Spindle to Table Surface	Rapid Travels Rate (X/Y/Z)	Tool Shank	Max. Tool Length / Weight	Tool Storage Capacity
LCV 380S	520/380/350	12,000 (15,000)	3.7/5.5	600 x 420	Fixed Table	220 ~ 570	48/48/48	BT30	200/3	20
LCV 380D	520/380/350	12,000 (15,000)	3.7/5.5	2-600 x 520	2 x 200	220 ~ 550	48/48/48		200/3	20
SM 400	530/400/350	12,000 (20,000/24,000)	3.7/5.5	600 x 400	200	150 ~ 500	60/60/60		150/3	21
SM 400DH	530/400/415	12,000 (24,000)	5.5/7.5	750 x 400	300	180 ~ 595	60/60/48		190/3	20 x 2
SM 400DDH	400/400/350	12,000	5.5/7.5	2 - 660 x 1,150	2 x 250	300 ~ 650	36/36/48		200/3	20 x 2
MCV 400D	550/400/350	12,000	7.5/11	2 - 600 x 520	2 - 200	200 ~ 550	48/48/36	BT40	200/3	16

## LM Guide Type Machining Center



### High Efficiency Machining Center

( ): Option

Model	Travels (X/Y/Z) (mm)	Spindle Speed (RPM)	Spindle Motor (Cont./Max) (KW)	Table Size	Max. Workpiece Weight	Spindle to Table Surface	Rapid Travels Rate (X/Y/Z)	Tool Shank	Max. Tool Length / Weight	Tool Storage Capacity
PCV 430	700/430/510	10,000 (15,000)	11/20.4	750 x 420	560	130 ~ 640	48/48/36	BT40	300/8	24
PCV 460	700/460/510	15,000 (10,000)	11/15			130 ~ 840				



### High Performance Machining Center

( ): Option

Model	Travels (X/Y/Z) (mm)	Spindle Speed (RPM)	Spindle Motor (Cont./Max) (KW)	Table Size	Max. Workpiece Weight	Spindle to Table Surface	Rapid Travels Rate (X/Y/Z)	Tool Shank	Max. Tool Length / Weight	Tool Storage Capacity
MCV 4300	770/430/510	12,000	11/18.5	920 x 460	600	150 ~ 660	36/36/30	BT40	300/8	30
MCV 5500	1,050/550/520			1,200 x 540	800	130 ~ 650	36/36/30			
MCV 5500L	1,250/550/520			1,330 x 540	800	130 ~ 650	30/30/30			
MCV 5700	1,050/570/520			1,300 x 570	1,000	150 ~ 670	36/36/30			
MCV 5700L	1,600/570/520			1,700 x 570	1,000	150 ~ 670	36/36/30			
MCV 6700	1,600/670/520			1,700 x 660	1,300	150 ~ 670	30/36/30			
MCV 6700L	2,100/670/520			2,200 x 660	1,200	150 ~ 670	30/30/30			
MCV 8500L	2,540/850/650			2,600 x 850	2,000	150 ~ 800	30/30/24			



## Box Guide Type Machining Center



### High Performance Machining Center

( ) : Option

Model	Travels (X/Y/Z) (mm)	Spindle Speed (RPM)	Spindle Motor (Cont./Max) (KW)	Table Size	Max. Workpiece Weight	Spindle to Table Surface	Rapid Travels Rate (X/Y/Z)	Tool Shank	Max. Tool Length / Weight	Tool Storage Capacity
LCV 550	1,150/550/520	6,000 Gear 8,000 Direct	11/15	1,200 x 550	800	150 ~ 670	24/24/20	BT50	300/15	24 (30)
		12,000 Direct 15,000 Direct						BT40		
LCV 6700	1,350/670/650	6,000 Gear 8,000 Direct	11/18.5	1,550 x 670	1,000	200 ~ 850	30/30/24	BT50	300/15	30
		12,000 Direct 15,000 Direct						BT40		
LCV 850	2,000/850/800	7,000	15/18.5	2,050 x 850	3,000	200 ~ 1,000	20/20/16	BT50	300/15	30
LCV 1060	2,500/1,060/900			2,800 x 1,060	5,000	200 ~ 1,100	16/16/16			

## Hybrid Type Machining Center



### Hybrid Type Machining Center

( ) : Option

Model	Travels (X/Y/Z) (mm)	Spindle Speed (RPM)	Spindle Motor (Cont./Max) (KW)	Table Size	Max. Workpiece Weight	Spindle to Table Surface	Rapid Travels Rate (X/Y/Z)	Tool Shank	Max. Tool Length / Weight	Tool Storage Capacity
HYST 5700	1,050/570/520	12,000	15/18.5	1,700 x 570	1,000	150 ~ 670	36/36/30	BT40	300/8	30
HYST 5700L	1,600/570/520									
HYST 6700	1,300/670/650	6,000 Gear 8,000 Direct	15/18.5	1,550 x 670	1,300	200 ~ 850		BT50		
		12,000 Direct						BT40		

## Long Bed Type Machining Center



### Multi Purpose Long Bed Type Machining Center

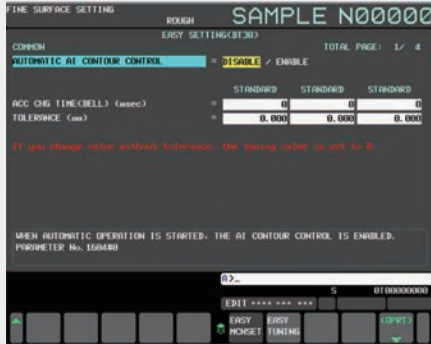
( ) : Option

Model	Travels (X/Y/Z) (mm)	Spindle Speed (RPM)	Spindle Motor (Cont./Max) (KW)	Table Size	Max. Workpiece Weight	Spindle to Table Surface	Rapid Travels Rate (X/Y/Z)	Tool Shank	Max. Tool Length / Weight	Tool Storage Capacity
MCV 420UL	6,200/420/450	10,000	7.5/11	6,600 x 460	Fixed Table	200 ~ 650	24/30/30	BT40	300/8	30
MCV 510XL	4,000/510/550	12,000	11/18.5	4,600 x 550		150 ~ 700				
MCV 610XL	4,500/610/550	12,000	11/18.5	5,000 x 610		150 ~ 700				

**Machining Solution (STD for Machining Center)**

# S4(SMEC SMOOTH SURFACE SYSTEM) Package

High performance NC options to improve machining performance provided as standard



Without S4 Package



With S4 Package

15 inch LCD monitor standard	
AICC II (AI Contour Control II)	Efficient accel/deceleration (200 block look ahead)
Jerk control	Speed control during acceleration changes
Smooth tolerance plus control	Stable curved shape forming
Machining conditions selection function	Adjust accuracy level according to machining conditions
Machining quality selection function	
Manual Guide i	Visual machining check and setup guide
Data server	Transfer large program files
Part program storage	2MB (5,120M)
Number of registered programs	1,000ea

**IoT Solution (OPT)**



**NC-Gate**  
Basic Platform



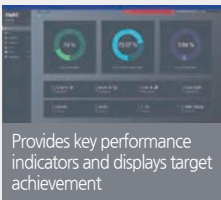
**IoT-Gate**  
Expansion Platform

## NC-Gate / IoT-Gate

The NC-Gate / IoT-Gate that was developed in-house with our ICT technology is a universal gateway that not only interworks with our machine tools, but machine tools from other manufacturers, robots, automation equipment, and analog / digital sensors as a network device capable of bi-directional communication.

Supported drivers : Fanuc / Mitsubishi / Siemens NC, Modbus TCP, DeviceNet, Profibus, Ethernet, AI/DI/DO

**KPI (Key Performance Indexes)**



Provides key performance indicators and displays target achievement

- Indicators : achievement rate, productivity, process defect rate, equipment and factory usage, quality defect rate, lead time, and average cycle time

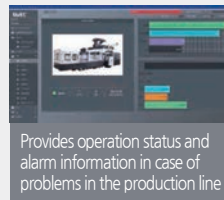
**OEE (Overall Equipment Effectiveness)**



Provides figures and graphs of overall equipment effectiveness

- Availability, performance, quality, etc. usage, quality defect rate, lead time, and average cycle time

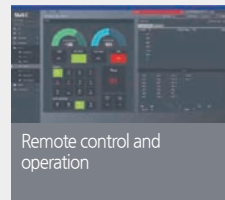
**Realtime Monitoring**



Provides operation status and alarm information in case of problems in the production line

- Provides information about the operation status, speed, production alarms, etc. of each machine

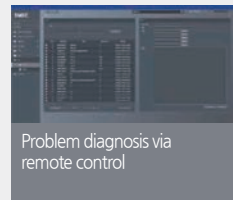
**Remote Control/Management**



Remote control and operation

- Emergency stop switch, program editing, etc.

**Remote A/S**



Problem diagnosis via remote control

- Provide remote diagnosis services to users via the IoT solution usage, quality defect rate, lead time, and average cycle time

## SMEC User Interface



### SMEC FANUC i PLUS Series

#### Machining Center


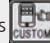
- 10.4/15" LCD color display
- Portable M.P.G

#### Turning Center

- 10.4/15" LCD color display
- Manual Guide i

#### Common Features

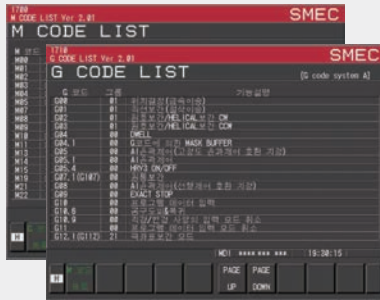
- Part program size 2MB
- High quality designed OP Panel
- SMEC Custom S/W

SMEC Custom S/W displayed using MDI's  button or OP Panel's  button



◀ **CUSTOM** : Provide operator convenience and improve productivity using the support function for tool management and additional device setting

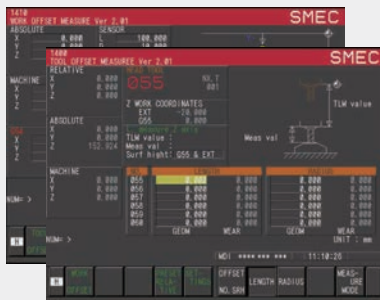
## SMEC HMI



M/G-Code check function



PMC alarm check function



Work coordinates, tool setting support function



Counter for each T-Code



ATC Magazine status check, setting and maintenance function



Simplified tailstock Setting



---

### **SMEC Co., Ltd.**

157-10, Goldenroot-ro, Juchon-myeon, Gimhae-si,  
Gyeongsangnam-do, Korea

Tel +82 55 340 4800 / Fax +82 55 340 4740

[www.esmec.com](http://www.esmec.com)

### **SMEC Europe GmbH.**

Hammer Landstr. 113, 41460 Neuss,  
Germany

Tel. +49 2131 531 4012

[www.smec-europe.com](http://www.smec-europe.com)

### **SMEC America Corp.**

14 W Forest Ave, Englewood, NJ  
07631, U. S. A

Tel. +1 201 816 7632

[www.esmecamerica.com](http://www.esmecamerica.com)